



Preliminary event program  
**Global Neuro Course**  
**Essentials in Neurotrauma**

Pre-Congress CLAN2018 course

November 10-11, 2018 | Santa Cruz de la Sierra, Bolivia



## Global Neuro welcomes you

On January 1, 2018, AONeuro became Global Neuro for the purpose of broadening our geographical reach and for the opportunity to work with multiple partners. Our new foundation is incorporated in Switzerland and is ready to serve you to improve the educational and practical experiences in patient care and outcomes.

We offer educational events across the world, with rigorously prepared and evaluated curricula, in multiple cultural and educational formats. Global Neuro's educational offerings include lecture presentations, interactive case discussions, small group discussions, practical exercises, simulation exercises, and online education. Global Neuro strives to increasingly collaborate with regional, national, and international societies and organizations to deliver symposia and courses at congresses and annual meetings. These partnerships enable us to provide the best formats possible.

While our initial educational efforts began with neurosurgeons, we are increasingly collaborating with neurologists, neurointensivists, neuroanesthesiologists, neuroradiologists, and other neuro professionals to provide comprehensive education and program development opportunities. Medicine, neurological care, and recovery are too complex to depend upon a single discipline. As such, collaboration is required to be able to make the greatest impact in our patients progress and outcomes.

We hope this program meets your expectations, as it is based on continuous development, study, evaluation, and discussion. Please let us know if you have ideas or suggestions for how we can enhance your learning and educational experience.

Please join our network of professionals as we work together to improve the results in neuro care and rehabilitation for all our patients.

Warm regards,

**Paul N Manson**

President Global Neuro Foundation



## Course description

This course covers the current best strategies and considerations for managing neurotrauma patients and is based on competencies defined in Global Neuro's curriculum. The content is delivered using multiple methods. Comprehensive lectures concentrate on the understanding of core material. Interactive case presentations further deepen this knowledge and enrich the discussion in trauma management. Demo sessions teach the application of Global Neuro principles to the management of common injuries. Case-based discussions link the lecture material and practical skills with the clinical problems encountered in clinical practice.

## Target participants

The Global Neuro Essentials Course has been developed for residents, surgeons, and physicians who manage cranial neurotrauma.

## Goal of the course

The Global Neuro Essentials Course—Neurotrauma covers the theoretical basis and practical principles that are the foundation for managing cranial neurotrauma.

## Learning objectives

By completing the essentials course, participants will be better able to:

- Perform an appropriate assessment of neurotrauma patients with application of relevant guidelines
- Choose the appropriate imaging modalities and interpret the results
- Perform ICP monitoring and interpretation to guide treatment interventions
- Manage cranial neurotrauma in adult, pediatric, and polytrauma patients
- Plan and perform the following operative techniques: burr hole, ICP monitor and EVD placement, decompressive craniotomy, dural enlargement, and basic cranioplasty
- Manage common complications such as bleeding, expanding intracranial hematomas, swelling, infection, and hydrocephalus

## Chairpersons



**Andrés Rubiano**  
Universidad El Bosque  
Bogotá, Colombia



**Jorge Paranhos**  
Hospital São Joao Del Rei  
São Joao Del Rei, Brasil

## International faculty

Franco Servadei	Humanitas University and Research Hospital	Milán, Italia
Shelly Timmons	Penn State University Milton S. Hershey Medical Center	Hershey, USA

## Regional faculty

Robson Amorim	Hospital das Clínicas da FMUSP	Manaos, Brasil
José Nel Carreño	Fundación Santa Fe de Bogotá	Bogotá, Colombia
Raúl Echeverrí	Clínica ValleSalud	Cali, Colombia
Wellingson Paiva	Hospital das Clínicas da FMUSP	Sao Paulo, Brasil
Juan Luís Pinedo	Hospital Nacional Almanzor Aguinaga Asenjo	Lima, Perú
Santiago Portillo	Hospital Italiano	Buenos Aires, Argentina

## National faculty

Luís Alberto Ramírez Roncal	Hospital San Juan de Dios	Beni, Bolivia
Raúl Selúm Ruíz	Hospital Japonés, Clínica Foianini	Santa Cruz, Bolivia
Marcelo Zenteno	Hospital San Juan de Dios	Tarija, Bolivia

## Saturday, November 10, 2018

TIME	AGENDA	FACULTY
08:00-08:30	Registration and Precourse Assessment <i>Registro y evaluación previa al curso</i>	
08:30-08:40	Welcome and Course <i>Bienvenida y objetivos del curso</i>	J Paranhos, A Rubiano/JN Carreño
<b>Module 1</b>	<b>Basics of Neurotrauma Management</b> <b><i>Conceptos básicos en el manejo de Neurotrauma</i></b>	<b>Moderator:</b> J Paranhos
08:40-08:45	Open Case Discussion: Decision making in neurotrauma <i>Discusión de caso abierto: Toma de decisiones en neurotrauma</i>	J Carreño
08:45-09:05	Fundamentals of traumatic brain injury (TBI) prehospital care <i>Fundamentos de atención pre-hospitalaria del trauma craneoencefálico (TCE)</i>	R Echeverri
09:05-09:25	Emergency room: TBI patient assessment <i>Sala de emergencias: evaluación del paciente con TCE</i>	R Selúm
09:25-09:45	Interactive Case Discussion: Polytrauma and TBI <i>Discusión interactiva: Politrauma y TCE</i>	J Paranhos
<b>Module 2</b>	<b>Diagnostics, Imaging and Pathologies</b> <b><i>Diagnóstico, Imagenología y Patología</i></b>	<b>Moderator:</b> JL Pinedo
09:45-09:50	Open Case Discussion: Imaging in neurotrauma <i>Discusión de caso abierto: Imagenología en neurotrauma</i>	JL Pinedo
09:50-10:10	Overview of neurotrauma pathologies <i>Panorama general de las patologías en neurotrauma</i>	W Paiva
10:10-10:30	Basic imaging and diagnostic tools in emergency situations <i>Imágenes básicas y herramientas para el diagnóstico en situaciones de emergencia</i>	R Echeverri
10:30-10:50	Coffee Break / Café	
10:50-11:10	Advanced imaging and prognosis <i>Imágenes avanzadas y pronóstico</i>	JL Pinedo
11:10-12:10	<b>Small Group Discussion</b> Mild TBI, Traumatic intracerebral hemorrhage (ICH), Chronic Subdural Hematoma (SDH) & NTx in the Elderly <b><i>Discusión de Casos en grupos pequeños</i></b> <i>TCE leve, Hemorragia intracerebral traumática (HIC), Hematoma subdural crónico y NTx en ancianos</i>	M Zenteno, W Paiva

TIME	AGENDA	FACULTY
<b>Module 3</b>	<b>Intracranial Pressure (ICP) Management</b> <b><i>Manejo de la Presión Intracraneal (PIC)</i></b>	<b>Moderator:</b> <b>JN Carreño</b>
12:10-12:15	Open Case Discussion: ICP Monitoring <i>Discusión de caso abierto: Monitoreo del PIC</i>	JN Carreño
12:15-12:35	Overview of ICP Monitoring Panorama general del monitoreo del PIC	J Paranhos
12:35-13:40	Lunch / Almuerzo	
13:40-14:00	Interactive Case Discussion: High ICP-Clinical management <i>Discusión interactiva: Manejo clínico de la hipertensión intracraneal (HIC)</i>	JN Carreno
14:00-14:20	Interactive Case Discussion: High ICP-Surgical management <i>Discusión interactiva: HICP-manejo quirúrgico</i>	W Paiva /R Amorim
14:20-14:40	Interactive Case Discussion: Bifrontal contusions <i>Discusión interactiva: Contusiones bifrontales</i>	R Echeverri
14:40-15:00	Decompressive Craniectomy: Surgical treatment and decision-making <i>Craniectomía descompresiva: Toma de decisiones y manejo quirúrgico</i>	JN Carreño
<b>Module 4</b>	<b>Systems Approach in TBI</b> <b><i>Enfoque de sistemas en TCE</i></b>	<b>Monitor:</b> <b>JN Carreno</b>
15:00-15:05	Open Case Discussion: Concussion <i>Discusión de caso abierto: Conmoción cerebral</i>	W Paiva
15:05-15:25	TBI in austere environments <i>TCE en ambientes austeros.</i>	R Echeverri
15:25-15:45	Educational Process in Neurotrauma <i>Proceso Educativo en Neurotrauma</i>	J Paranhos
16:05-16:25	Clinical Research in Neurotrauma <i>Investigación Clínica en Neurotrauma</i>	R Amorim
16:25-16:50	Coffee Break / Café	
16:50-17:10	Global Neuro: Present and Future <i>Global Neuro: Presente y futuro</i>	A Rubiano
17:10-18:50	<b>Practical Exercise-DEMO</b> <b><i>Demostración de ejercicios prácticos</i></b> 1.Decompressive Craniectomy and Reconstruction <i>Craniectomía descompresiva y reconstrucción</i> • R Echeverri, S Portillo, J Paranhos 2.Pupillometry and Optic Nerve Ultrasound / (TCD Optional) <i>Pupilometría y ultrasonido del nervio óptico (TCD Opcional)</i> • JL Pinedo, R Amorim	All Faculty

3.Placement of external ventricular derivation EVD / ICP bolt  
*Implantación del tornillo de PIC y derivación ventricular  
externa(DVE)*

- JN Carreño, W Paiva

18:50-19:00

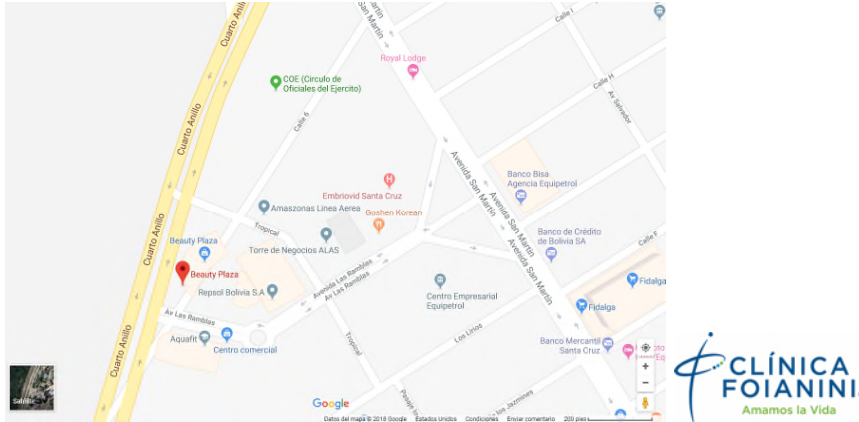
Evaluation and wrap up of day 1  
*Evaluación, cierre y fin del día 1*

J Paranhos, A  
Rubiano/JN  
Carreño

## Sunday, November 11, 2018/

TIME	AGENDA	FACULTY
08:30-08:40	Welcome day 2 <i>Bienvenida Día 2</i>	
<b>Module 5</b>	<b>Treatment Guidelines and Postoperative Care</b> <b><i>Guías para el Tratamiento y Cuidado Postoperatorio</i></b>	<b>Monitor: JL Pinedo</b>
08:40-08:45	Open Case Discussion: TBI guidelines <i>Discusión de Caso abierto: Guías de TCE</i>	R Amorim
08:45-09:05	Pediatric TBI guidelines <i>Guías de TCE pediátrico</i>	S Portillo
09:05-09:25	TBI in elderly patients: Special considerations <i>TCE en pacientes geriátricos: consideraciones especiales</i>	JL Pinedo
09:25-09:45	TBI Patients: Early and late complications <i>Pacientes con TCE: complicaciones tempranas y tardías</i>	S Timmons/JN Carreño
09:45-10:05	Cranial Vault Reconstruction and Dural Repair <i>Reconstructucción del craneo y la duramadre</i>	W Paiva
10:05-10:25	Traumatic brain injury from a global perspective <i>Trauma craneoencefálico desde una perspectiva global</i>	F Servadei
10:25-10:45	Coffee Break / Café	
10:45-11:45	<b>Small Group Discussion</b> <b>3 Cases: Postoperative bleeding, central nervous system (CNS) infection, hydrocephalus &amp; cerebrospinal fluid (CSF) leak</b> <b><i>3 Casos: Sangrado postoperatorio, infección del sistema nervioso central (SNC), Hidrocefalia y fistula de liquido cefalorraquideo (LCR)</i></b>	F Servadei /JN Carreño, S Timmons, S Portillo
11:45-12:00	Closing the course <i>Cierre del curso</i>	J Paranhos, A Rubiano/JN Carreño





## Event venue

### **Auditorio Consultorios Clínica Foianini Beauty Plaza – Equipetrol**

Sobre el 4to. anillo esquina Av. Las Ramblas, Entre Av. Busch y Av. San Martín  
Santa Cruz de la Sierra, Bolivia

## Event organization

### **Global Neuro Foundation**

Clavadelstrasse 8  
7270 Davos  
Switzerland

### **Event organizer**

Ximena Rodriguez  
Phone +1 321 732 2199  
Email [Ximena.rodriquez@globalneuro.org](mailto:Ximena.rodriquez@globalneuro.org)

## Global Neuro funding sources

Unrestricted educational grants from different sources are collected and pooled together centrally or for specific events by the Global Neuro Foundation. All events are planned and scheduled by local and regional Global Neuro surgeon groups based on local needs assessment. We rely on commercial partners for in-kind support to run simulations/skills training if educationally needed.

## Event organization compliance

In certain countries where Global Neuro has no office but offers educational events, the Global Neuro cooperates with third-party companies to conduct local organization and logistics, as well as to communicate with participants in the local language. In these cases, the Global Neuro Foundation has put rules and guidelines in place (Letter of Secondment, Global Neuro Foundation—Principles of Educational Events) to ensure that this cooperation has no impact on the curricula, scientific program, or faculty selection.

## General information

### Event fee

**Global Neuro Course—Essentials in Neurotrauma fee is:**

**USD 70.00 Specialists**

**USD 49.00 Residents (30% discount)**

Included in the course fee are course material, coffee breaks, lunch, and course certificate.

### Registration

Please click on the registration link below to register for the Global Neuro Course—Essentials in Neurotrauma:

[https://www.globalneuro.org/event\\_details/100](https://www.globalneuro.org/event_details/100)

### Course certificate

The course certificates can only be provided if the participant attends the entire event (100%) and will be available at the end of the event.

### Evaluation guidelines

All Global Neuro events apply the same evaluation process, either online (pre- and post-event evaluation) or/and onsite by paper and pencil questionnaires. This helps Global Neuro to ensure that we continue to meet your training needs.

### Dress code

Casual

### No insurance

The event organization does not take out insurance to cover any individual against accidents, theft or other risks.

### Security

Security checks may be conducted at the entrance of the building. Wearing of a name

tag is compulsory during lectures, practical exercises, and group discussions.

### Mobile phone use

Use of mobile phones is not allowed in the lecture halls and in other rooms during educational activities. Please be considerate of others by turning off your mobile phone.

### Intellectual property

Event materials, presentations, and case studies are the intellectual property of the event faculty. All rights are reserved. Check hazards and legal restrictions on

[www.globalneuro.org/legal](http://www.globalneuro.org/legal)

### **Recording, photographing, or copying of lectures, practical exercises, case**

**discussions, or any course materials is strictly forbidden. Participants violating intellectual property will be dismissed.**

The Global Neuro Foundation reserves the right to film, photograph, and audio record during their events. Participants must understand that in this context they may appear in these recorded materials. The Global Neuro Foundation assumes participants agree that these recorded materials may be used for Global Neuro marketing and other purposes and made available to the public.

# Global Neuro Foundation—Principles of Educational Events

## 1) Academic independence

Development of all curricula, design of scientific event programs, and selection of faculty are the sole responsibilities of volunteer surgeons from the Global Neuro network. All education is planned based on needs assessment data, designed and evaluated using concepts and evidence from the most current medical education research, and involving the expertise of the Global Neuro Education Institute ([www.globalneuro.org](http://www.globalneuro.org)).

Industry participation is not allowed during the entire curriculum development and planning process to ensure academic independence and to keep content free from bias.

## 2) Compliance to accreditation and industry codes

All planning, organization, and execution of educational activities follow existing codes for accreditation of high-quality education:

- Accreditation Criteria of the Accreditation Council for Continuing Medical Education, USA ([www.accme.org](http://www.accme.org))
- ACCME Standards for Commercial Support: Standards to Ensure Independence in CME Activities ([www.accme.org](http://www.accme.org))
- Criteria for Accreditation of Live Educational Events of the European Accreditation Council for Continuing Medical Education ([www.uems.eu](http://www.uems.eu))
- Events that receive direct or indirect unrestricted educational grants or in-kind support from industry also follow the ethical codes of the medical industry, such as:
  - Eucomed Guidelines on Interactions with Healthcare Professionals ([www.medtecheurope.org](http://www.medtecheurope.org))
  - AdvaMed Code of Ethics on Interactions with Health Care Professionals ([www.advamed.org](http://www.advamed.org))
  - Mecomed Guidelines on Interactions with Healthcare Professionals ([www.mecomed.org](http://www.mecomed.org))

## 3) Branding and advertising

No industry logos or advertising (with the exception of the Global Neuro Foundation) are permitted in the area where educational activities take place.

Sponsors providing financial or in-kind support are allowed to have a promotional booth or run activities outside the educational area with approval from the event chairperson.

## 4) Personnel

Industry staff are not allowed to interfere with the educational content or engage in educational activities during the event.

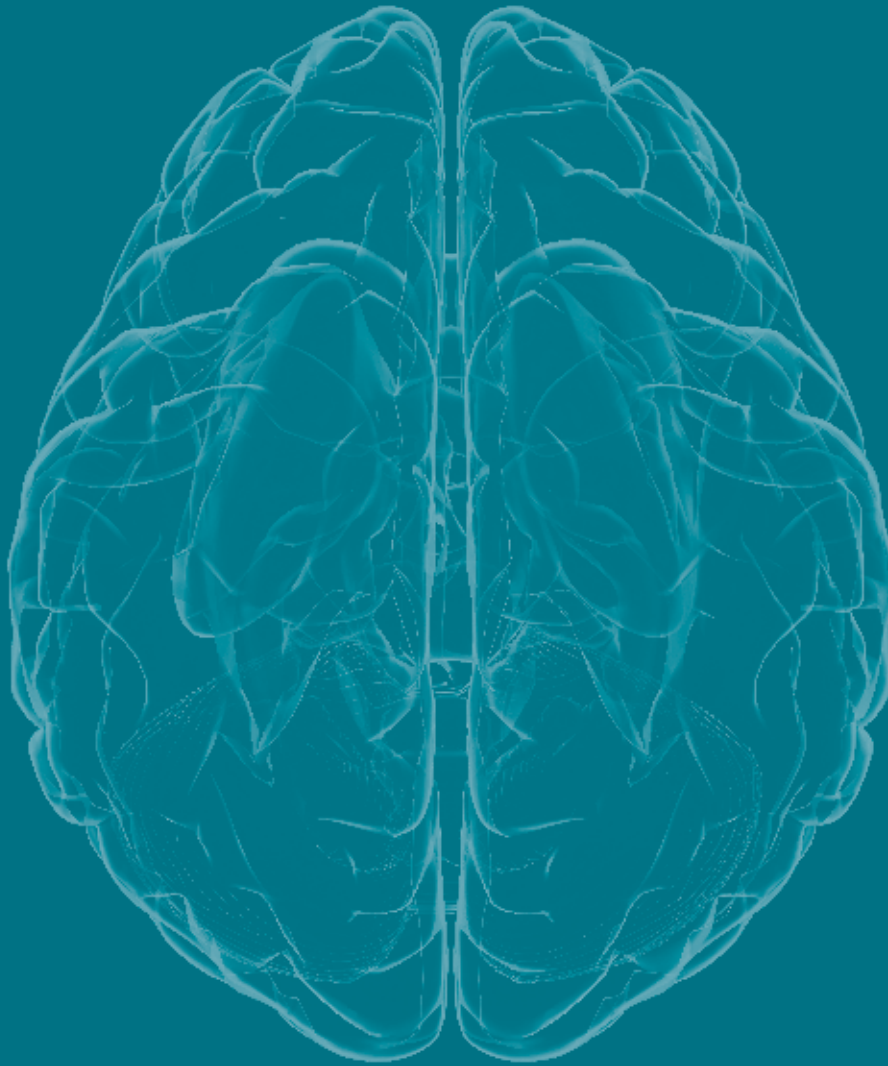
## Sponsors

We thank our major industry partners DePuy Synthes for contributing in-kind support (material and logistics) without which this event would not be possible. A special thanks to DePuy Synthes for providing an unrestricted educational grant for this event.





Global Neuro



Stay up to date with our educational activities.  
Visit [www.globalneuro.org](http://www.globalneuro.org) today.

**Global Neuro**

Clavadelstrasse 8 | 7270 Davos, Switzerland | [info@globalneuro.org](mailto:info@globalneuro.org) | T +41 81 414 25 59  
[www.globalneuro.org](http://www.globalneuro.org)